

ELK- 900M

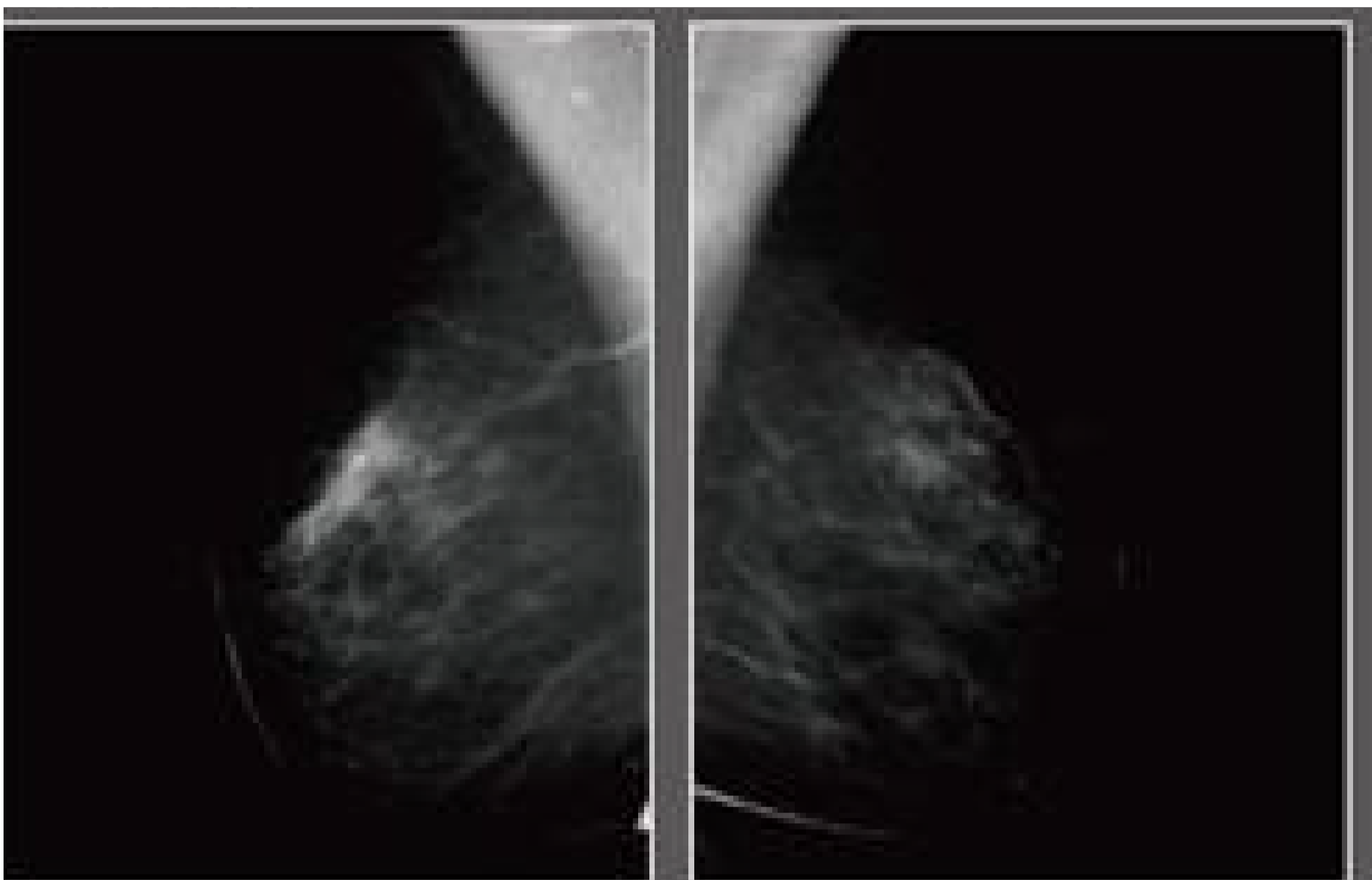
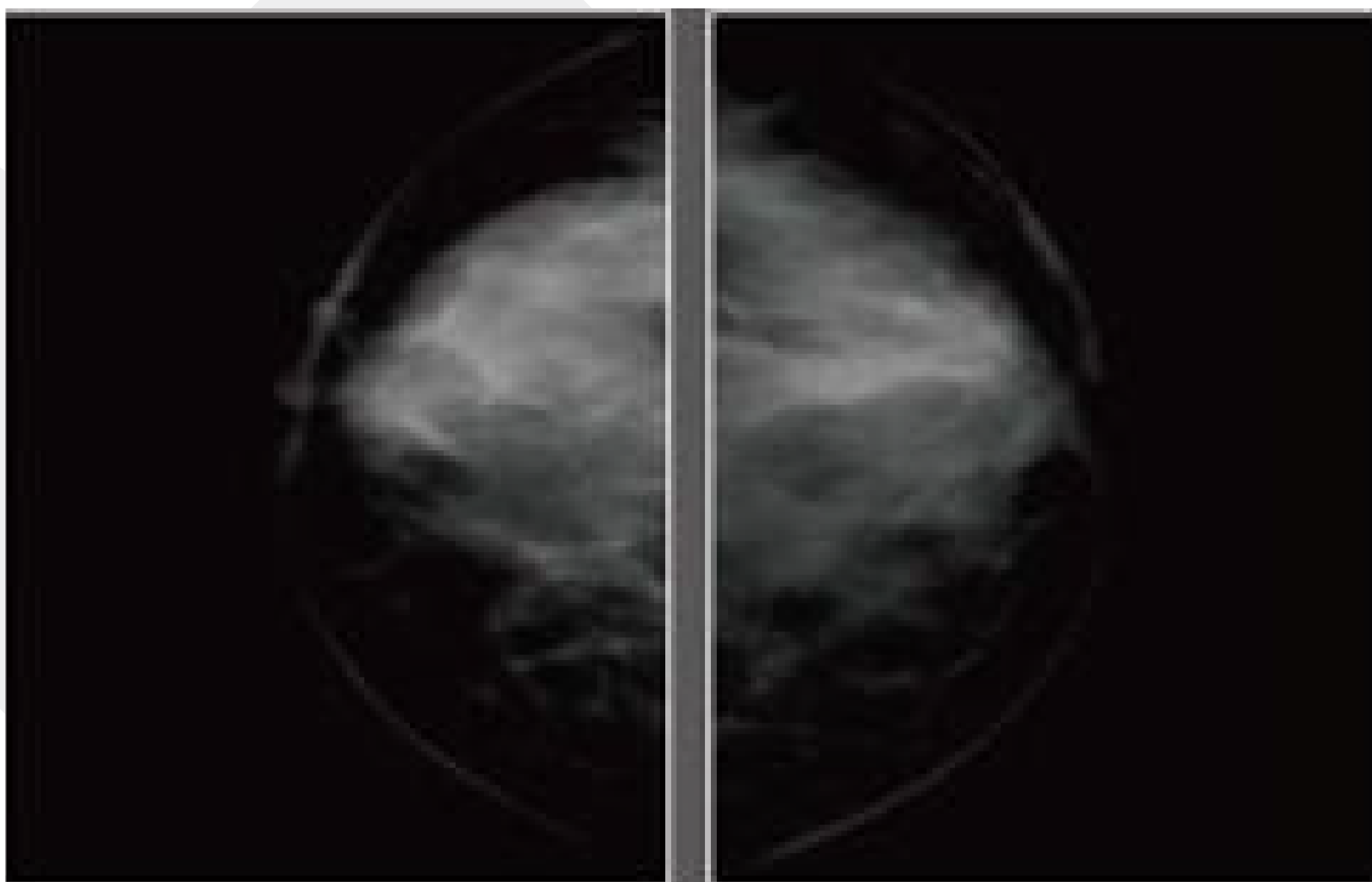
DIGITAL MAMMOGRAPHY SYSTEM



ELK-900M

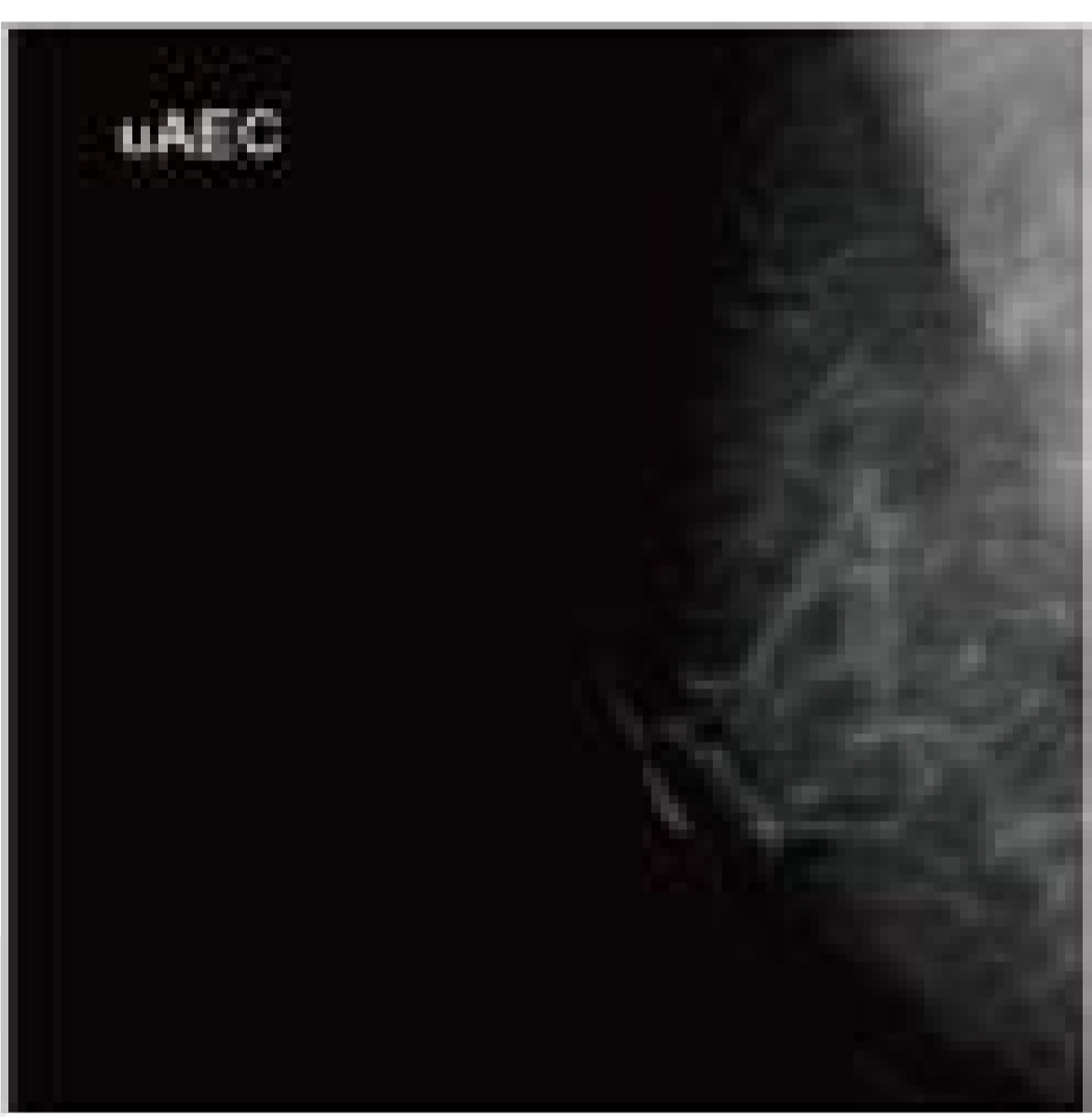
Image optimal presentation

Hedy patent IMACOPE algorithm and based on the human visual system contrast equilibrium display ensure the mammary image presented by the optimal way.



Smart AEC (Automatic Exposure Control)

Advanced AEC, filament automatic calibration and anode heat capacity automatic calibration; Double stable module of DC filament power supply makes the X-ray tube emission current more stable.



Double focus and double speed tube

High-power and high heat capacity tube with double focus and speed rotating anode design makes it have both sharp image and high load capacity.

Large size of FPD

The A-Se FPD maximum size of 24cmx30cm makes X-ray signal transforming to electric signal directly ----reduce the noise and greatly improve the transform efficiency.



ELK-900M

Beautiful frame perfectly unified appearance and inherent

Isocenter streamline design

It can radiography all position with any angle as you like. Vibrating grid, zoom mode, telescopic switch, electric operation, preset position, angle remember and auto one key positioning features make the operation more convenient and flexible.



Intelligent flexible oppression

Real time pressure display, automatically stop compressing at the best position, ensure the full breast completely pressed under safe and comfortable surroundings, pressure would be automatically released after the examination finished in the first time.



Graceful streamline design

Unlike the traditional medical devices with cold and inflexible feelings, our MXR-550 was designed from the vision of female, the whole system with smooth, elegance and graceful appearance to create a warm atmosphere for examination and reduce patient's sense of fear effectively.



Accord with ergonomics

The console accord with the design principle of ergonomics, it makes the operation easier and more comfortable.



ELK-900M

ELK-900M Performance parameter table of main components

Parameters and performance
Basic function
Application: it is specially used for human breast tissue photography to obtain tissue images for breast disease diagnosis and breast cancer screening.
Rack system
Frame structure: vertical C-arm type, Motorized Rotation.
C-arm rotation range: -165° ~ +180°
Vertical movement range of C-arm: 650mm-1400mm(Motorized)
The C-arm can be locked at any position in the whole stroke
The rack display screen can display the current position and position information to be photographed, and has the function of one key in place, which can switch the preset position with one key.
Distance between focus and image receiving surface (FID): 660mm
High voltage generator assembly (Japan)
Maximum output power: 5KW
Input Power: Single Phase, 200-240 V AC
Output current range: 10ma-160ma
Output voltage range: 20-40kv
Current time product regulation range: 0.5-500mas
With exposure control system, support one key exposure or hand brake exposure.
Loading time range: 0.005s-10s
Exposure Time Range(ms): 5 ms ~ 10000 ms
X-ray tube assembly (Japan)
Double speed rotating anode
Nominal tube voltage: 40kV
Anode heat capacity: 300KHU
Anode rotating speed: 10000 rpm
Anode material: Molybdenum (Mo)
Nominal focus size: small focus 0.1mm, large focus 0.3mm
Max. Current(mA): 160 mA
Anode Target Angle: 10°/15°
Max. kW Ratings: 4kW, 16 kW

ELK-900M

Exposure Voltage: 20~49kV
X-ray tube cooling method: By air
Flat panel detector Component
Detector Material: Amorphous silicon
Scintillator: Caesium Iodide (CsI)
Imaging size: 240mm x 300mm (9.4inch 11.8inch)
Conventional spatial resolution: 7 lp/mm
Pixel matrix: 4096 x 3072
Pixel size: 77 μm
A/D conversion: 16 bits
Imaging preview time: 9 s
Imaging time: 10 s
Data Transmission Method: Ethernet
Detector Type: Wired Flat Panel Detector
Mammography compression device
Elevation Method: Motorized/Manual Micro Adjustment. The compression motion control is manual and electric, and the extrusion action can be released at any time during the extrusion process. Occurring power failure, the pressure plate of the compressor can release the pressure.
Compression plate movement range: under the ordinary photographic platform, the movement range is 245mm. Under the 1.5 times magnification photographic platform, the movement range is 150mm, and under the 1.8 times magnification, the movement range is 75mm.
Intelligent flexible oppression: real time pressure display, automatically stop compressing at the best position, ensure the full breast completely pressed under safe and comfortable surroundings, pressure would be automatically released after the examination finished in the fist time.
Compression Plate Size: 24*30 cm and 18cm x 24cm (standard)
Elevation Range: ≥25 cm
Release Method:Motorized/Manual
Motorized compression with select-able speed, fine-tuned compression adjustment.
Compression plate pressure range: with electric drive: 150 ~ 200N; with manual drive: ≤ 300N
2 foot pedals for compression

ELK-900M

Grid, Collimator & Enargement system
Grid Inter-space Material: Carbon fiber Grid Cover Material: Carbon fiber
Focus: 65 cm
Grid Ratio: 5:1
Grid Density: 41 L/cm
Grid Dimension: 246mm x 338 mm
Collimator Illumination: ≥180 LUX (SID=65 cm)
Light Source Delay Time: 30s
With position light
Enlargement System: magnification paddle kit factor 1.5x & 1.8x
Spot paddle 9 cm x 9 cm (optional)
Perforated paddle 16cm x 20xm (optional)
Workstation software function
Independently developed and produced by the manufacturer. (Possess software copyright certificate corresponding to the function)
Real-time monitor high-voltage generator and flat panel detector communication status
Possess puncture biopsy upgrade interface
One-key switch function
Support diagnostic report writing with corresponding template
Support DICOM3.0 standard laser camera printing with optional configuration (film size, typesetting)
Support DICOM3.0 standard archiving service: archive image to server and automatically send in the background.
Compliant with DICOM3.0 standard (DICOM transmission, storage, printing), seamlessly connect with RIS system
Support manual input, bar code scanning for patient information, or attain directly from HIS/RIS via DICOM Work list
Case management: patient information, inspection information and image management
Multiple display modes: image display layout, automatic/manual window width & window level adjustment, positive and negative image display, step zoom or infinite zoom display
Window width, window level and Gamma adjustment; multi-point LUT curve adjustment; positive and negative film conversion; image scaling, mirroring, translating, rotating and magnifying; image smoothing, sharpening, noise reduction, edge extraction, and tissue equalization; image annotation function including straight line drawing, rectangle and character, original image display, full-screen display, histogram display, window width preset for different parts, real-time warning image capacity that can be stored in the system

ELK-900M

Digital photography function: configurable positive and negative image acquisition; real-time window width and window level adjustment; real-time ROI clipping, real-time horizontal and vertical mirroring and rotating to be selected according to different parts; Patient information, inspection information, device information and image information can be displayed
Original private custom image processing style mode: different image styles can be set according to different body types of patients or different modes can be set according to doctor's viewing style
Support XML formatting report: typeset report, switch report style and support WYSIWYG function
Multifunctional image acquisition and processing integrated workstation
Operating System: Windows 10 (English)
CPU: 8G
Hard Disk Drive: 1TB
Professional medical display, 5MP, 21.3 inch
Display resolution: 2048x2560
Display contrast: 1000:1
Brightness: 1200 cd/m²
Contrast Ratio: 1200:1
Viewing Angle ≥170°
Workstation memory: 8g
Storage capacity: 1TB SSD (system hard disk capacity) + 3TB SATA (storage)
Ethernet card 10/100/1000 Mbits
Engraver CD/DVD 8X DVD+/-RW
USB Ports 3.0 with two front ports