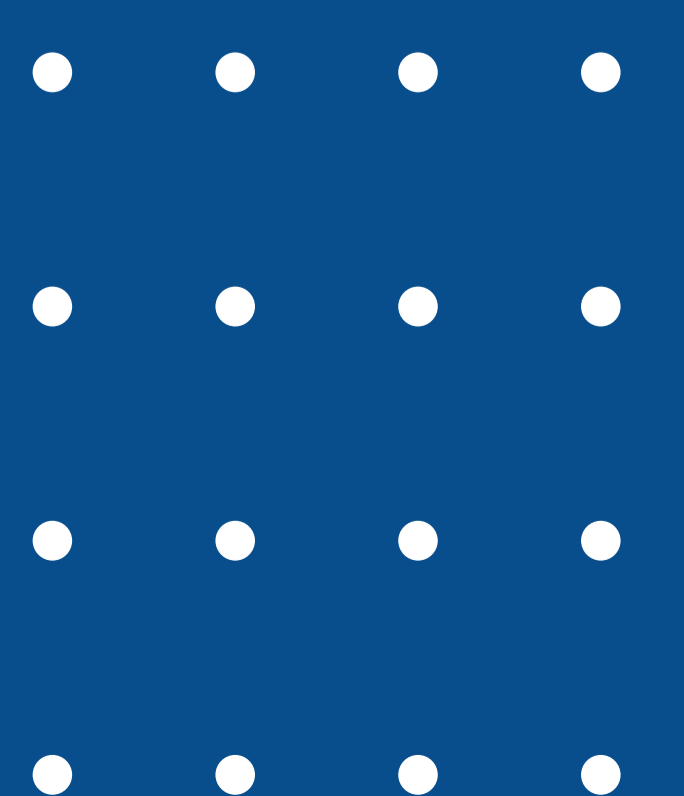


AU-Y15

PORTABLE B/W LAPTOP

ULTRASOUND SCANNER



AU-Y15 Portable B/W Laptop Ultrasound Scanner

Specification

Operating system	ARM chip architecture, stable, simple and powerful
Display	15-inch 1024 * 768 resolution HD LCD
Display modes	B, B+B, B+M, M, 4B
Gray scale	256 levels
Rechargeable lithium battery standby time	≥2 hours
Body Position marking	≥97 types
Maximum Cine Loop	250 frames
Image storage	≥360 images
Image Saving Format	JPG, BMP, FRM
External interfaces	VGA, dual USB2.0, RS232
Language settings	English/French/Spanish/Germany/Russian/Czech, etc
Fast Report Editable function	



Standard Accessories

- BAG
- VIDEO CABLE
- USB
- POWER CABLE
- OPERATOR MANUAL

Optional Accessories



Video Thermal Printer



Metal Box



Trolley

Medical ultrasound imaging equipment

Various Universal Probe



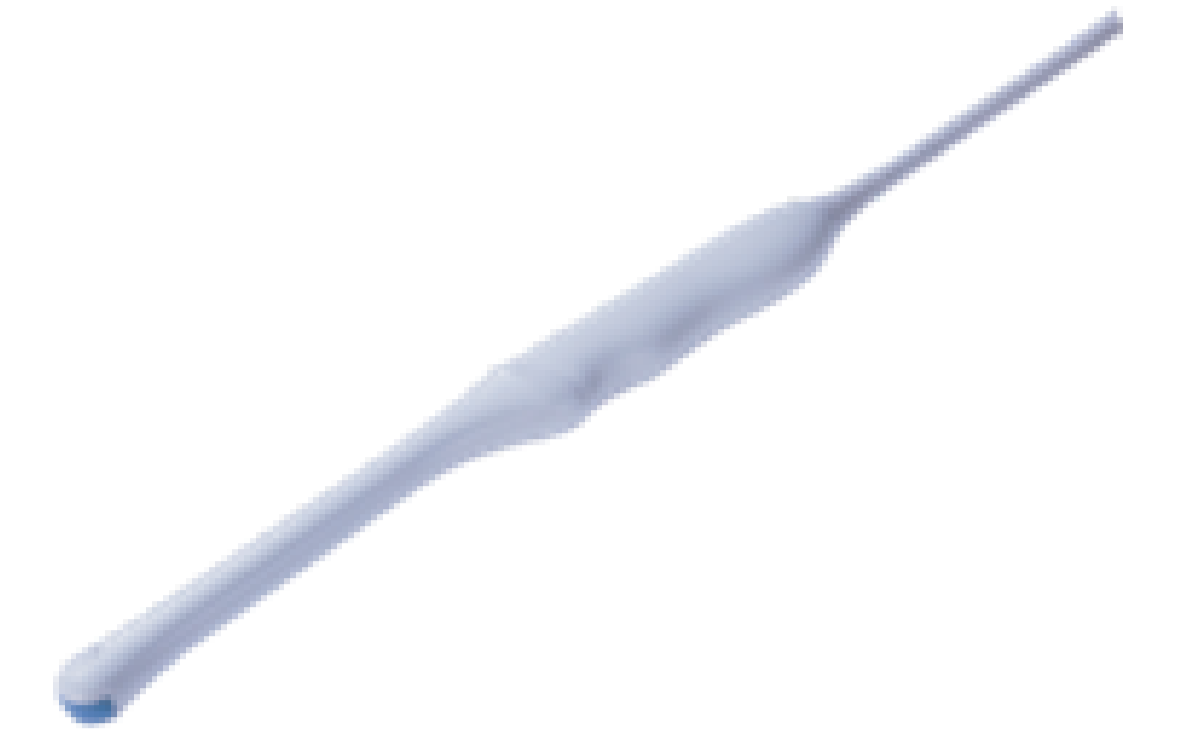
3.5MHz Convex Probe



5.0MHz Micro-convex Probe



7.5MHz Linear Probe



6.5MHz Trans-vaginal Probe

Strong Software Function

- Probe Automatic recognition & Adjustment of Elements(80/86/128) on various body part.
- Clinical experience database software to do one key optimization.
- Power saving mode and one key restart function
- Scanning angle adjustable
- Image magnification: individual knob depth adjustment (≥ 20 levels adjustable)
- Image adjustment: up/down, left/right, brightness, focus position, dynamic range, scanning angle, frame correlation, M speed
- Image processing: image smoothing/sharpening, tissue harmonics, gamma correction, pseudo-colors
- Puncture: with puncture guide line, adjustable angle and position
- Focus: focus position adjustable, focus position 5-speed adjustment
- Multiple Measurement functions:
 - a. Routine measurements: distance, perimeter, area, volume;
 - b. Cardiac measurements: left atrium, right atrium, left ventricle, right ventricle, aorta, descending aorta, aortic isthmus;
 - c. Obstetric measurements: gestational sac, biparietal diameter, head circumference, abdominal circumference, femur length, fibula length, cephalic and hip diameter, yolk sac, abdomen, size of the brain, last menstrual period, amniotic fluid, gestational age, expected date of delivery, and fetal weight;
 - d. Gynecological measurements: uterine corpus, cervix, endometrial thickness, ovaries, follicles;
 - e. Urologic measurements: kidneys, adrenal glands, prostate, testicular masses, epididymis, etc;
 - f. Pediatric measurements: common hepatic duct, common bile duct, pancreas, spleen, kidneys, adrenal glands, etc;
 - g. Small organ measurements: thyroid, seminal vesicles, testes, scrotum, breast masses, skin masses, etc.

