

MECHANICAL HOSPITAL BED WITH 4 SECTIONS



*Picture for reference only

Mechanical Hospital Bed with 4 Sections

Material:	Stainless steel
Standard:	Stainless steel headboard and tailboard, stainless steel guardrail, stainless steel infusion rack. Four-foot full brake medical standard caster
Function:	Back tilt: 75°±5°
Leg tilt:	40°±5°
Overall lift:	270mm

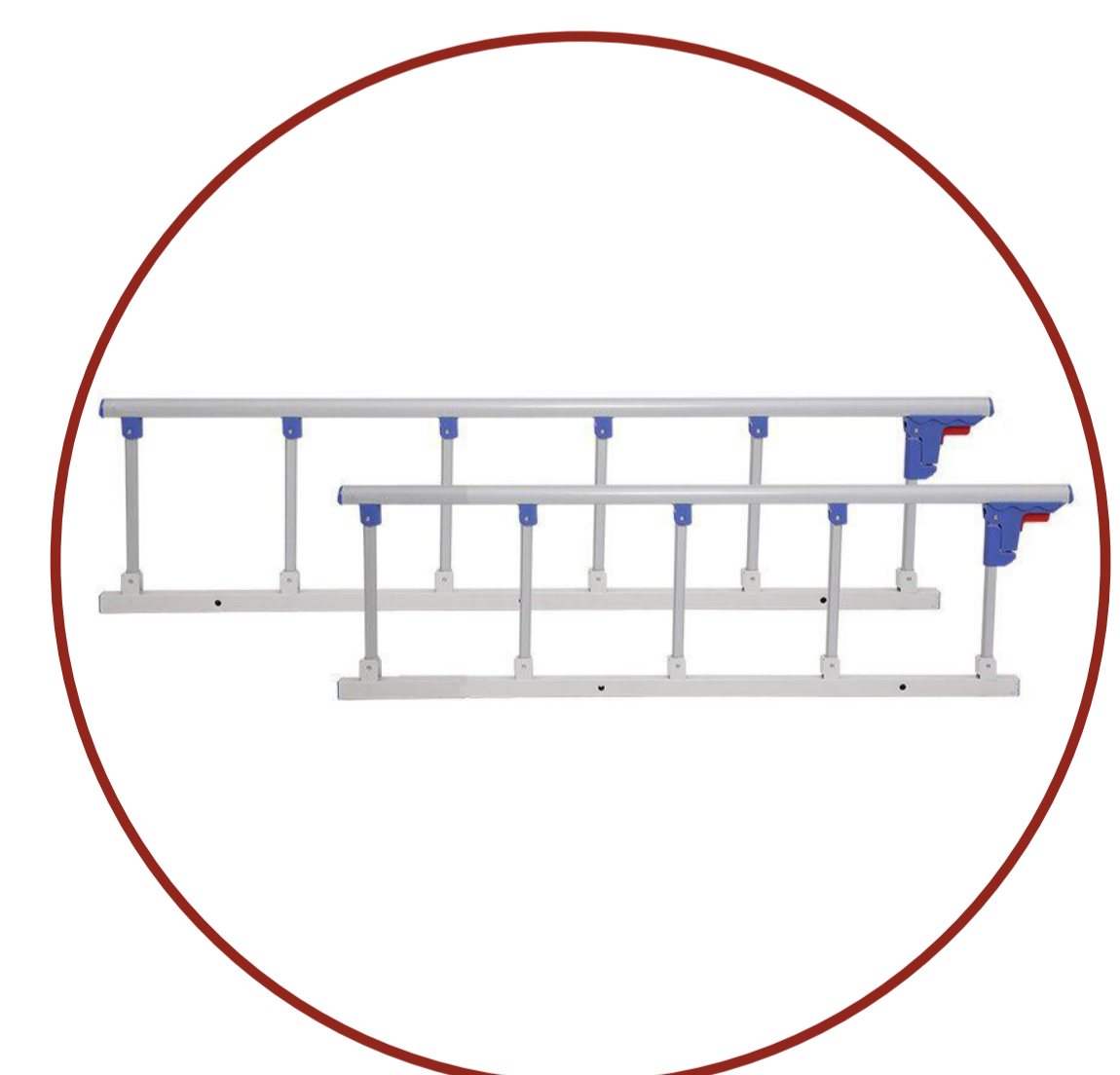
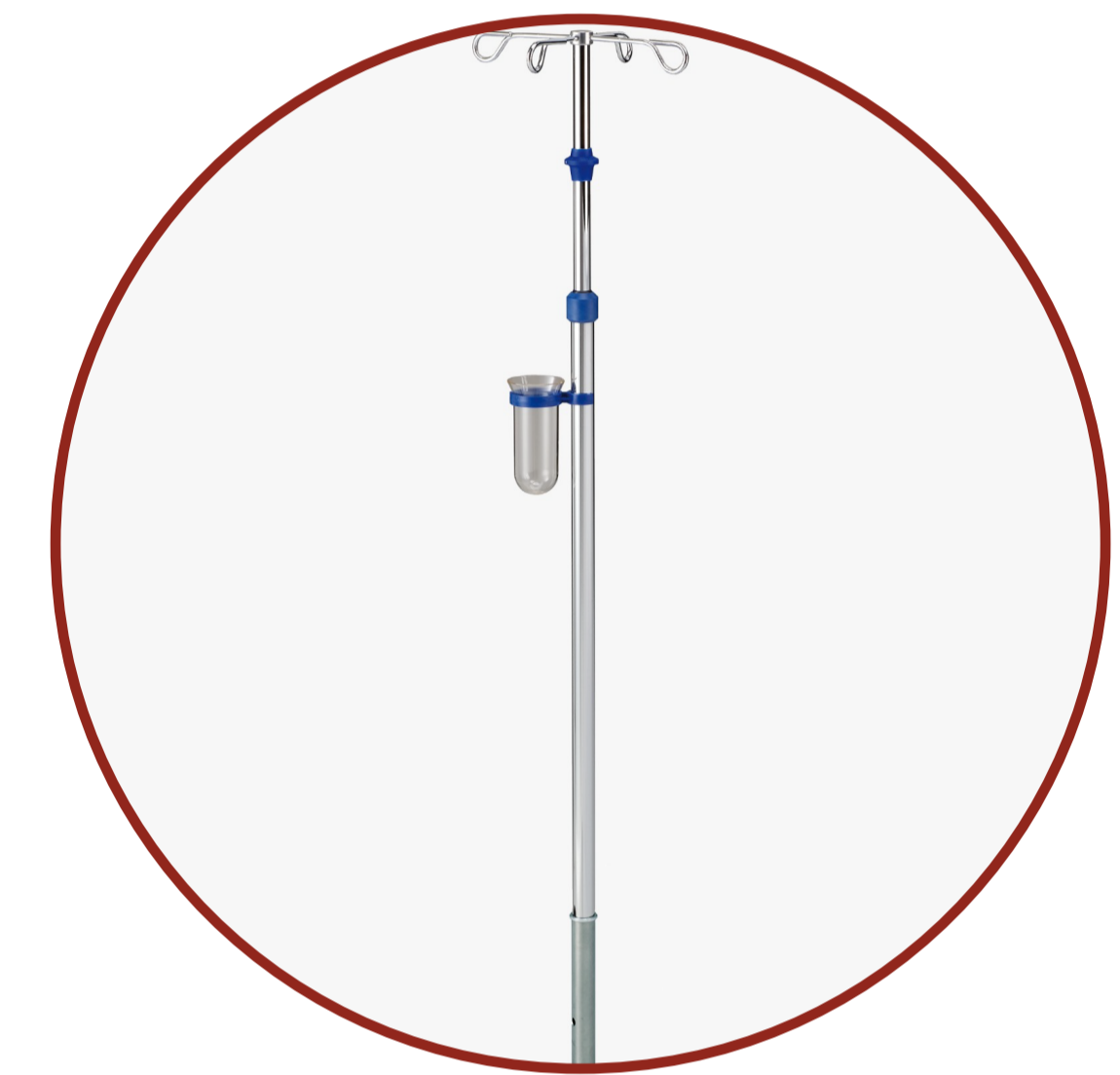
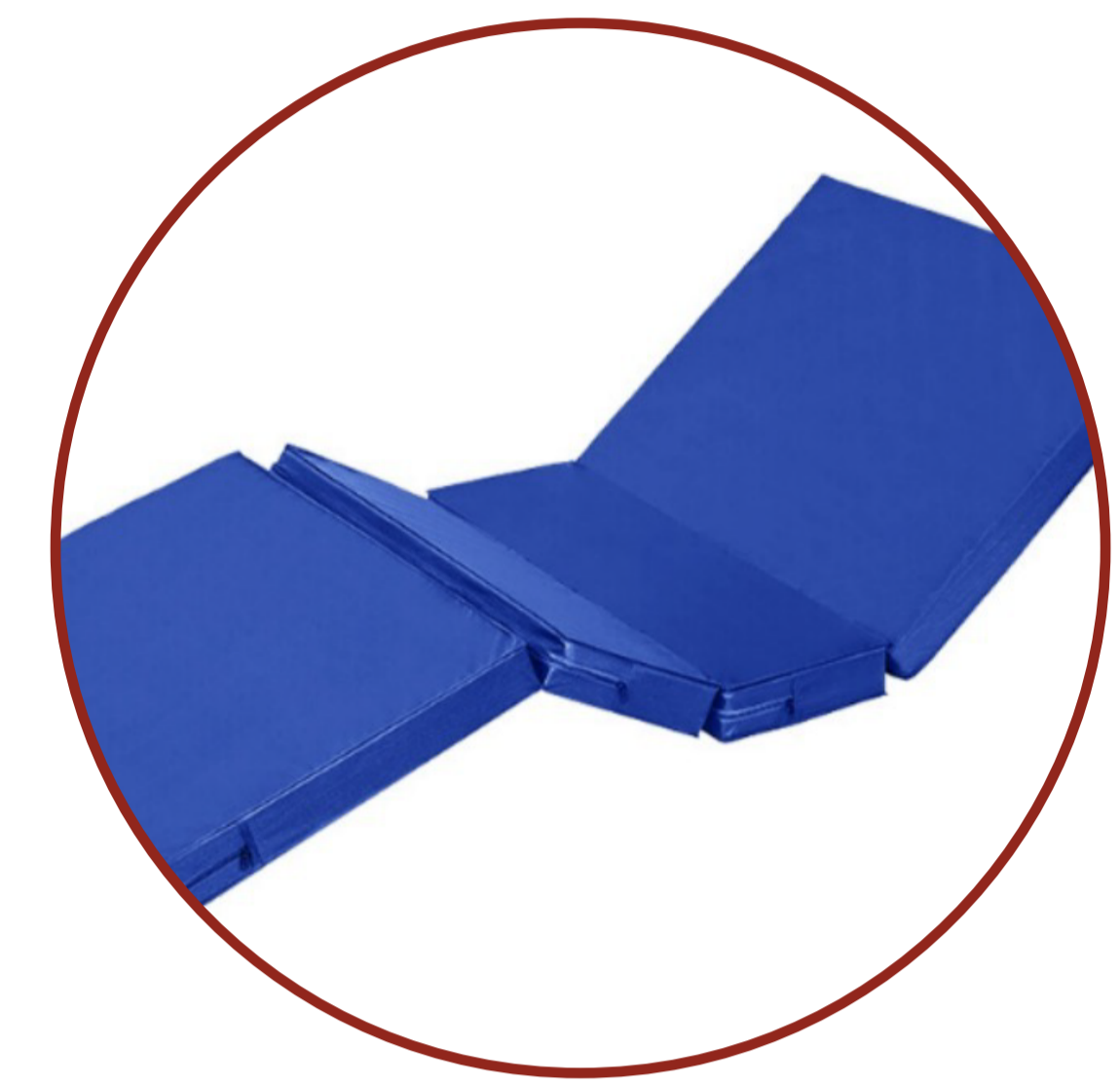
Product characteristics

- Bed frame bed panel is welded by rectangular stainless steel tube; The whole bed panel has a number of gap slots, breathable and moist-proof, Effective prevention and treatment of bedsores; There are reinforced ribs under the backplane of the bed, and double support bottom beam is used to make it more durable; The headboard and tail board are made of high-quality stainless steel bending and rolling forming, which is easy to operate and easy to use.
- Excellent polishing process makes the surface smooth, smooth and bright.
- Rocker system: adopts imported high-strength bearing steel screw, made of fine steel, safer, wear-resistant, lightweight and labor-saving, no noise
- The four corners of the bed have four drops stand jacks, which are convenient for infusion in different positions

Mechanical bed 4 sections with the following accessories included:

- Intravenous fluid pole (I.V. Pole) and mattress
- Bed surface: L208*W96*H45-75cm
- Wheels: 6 inch double-side secure castor with brakes
- Detachable ABS head of bed head and footboard and side rails
- One removable step
- Attachable aluminium side rails

All necessary accessories included for good operation CE certified



*Pictures for reference only

Accessories as requested will be provided