

ELEKTRO MOBI-50

MOBILE DR IMAGING SYSTEM



Characteristics

1. A key to Unlock.

Four key unlock buttons design, which is easier to lock and operate, can realize all-directional and multi-angle positioning to meet various also complex radiography needs.

2. Large-size Touch Screen

The 19-inch large-size touch screen integrates the control and communication of the image system & high voltage generator, making the operation more intelligent and humanized.

3. Large Capacity for Battery Storage

Equipped with high quality battery, with short charging time, long standby time, and long service life.

4. High Performance Industrial Computer

Fast image processing:

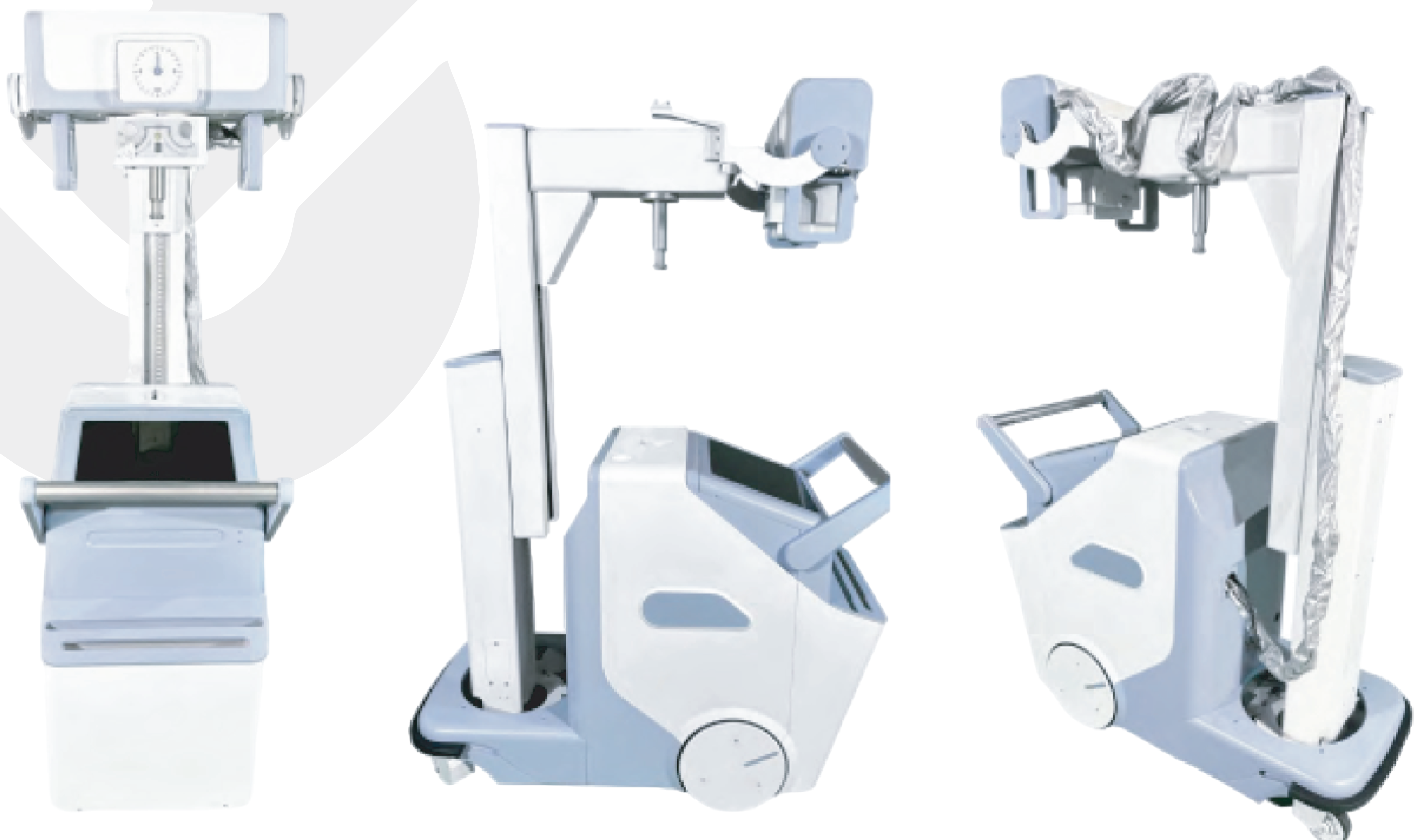
- Abundant external interface to meet various information interface extension.

5. Humanized design and intelligent control mode

- Integrated workstation which integrates the image acquisition system and the X-ray generator control system, that is convenient and quick to operate. The image acquisition system has multiple functions such as patient management, image acquisition, image processing, image observation, and case reports. The workstation supports the DICOM3.0 standard protocol and can transfer images with PACS system.
- Graphical operation interface Large-size LCD touch screen, equipped with professional image processing software with humanized graphical interactive interface which can shorten the running-in period.

6. Anti-Collision design

- Equipped with an automatic collision protection device, which protects people and machines well.





Technical Specification

- a) **Type:** Elektro Mobile X-ray unit with telescopic X-ray tube arm, sliding column and wireless portable detector
- b) **Tube column rotation:** $\pm 320^\circ$
- c) **Power for charging:** 220V AC
- d) **Motorization:** 0-5 km/h
- e) **Dimension Detail**
- f) **Wheel size**
- g) **Motorization:** 0-5 km/h (0-3.1 mph)
- h) **Focal point distance from floor sliding column:** 491.5mm-2128.5mm
- i) **Focal point distance from column max:** 952mm~1475mm
- j) **X-ray Generator**
Output power: 50KW
Inverter frequency: 260KHZ
- k) **X-ray Tube**

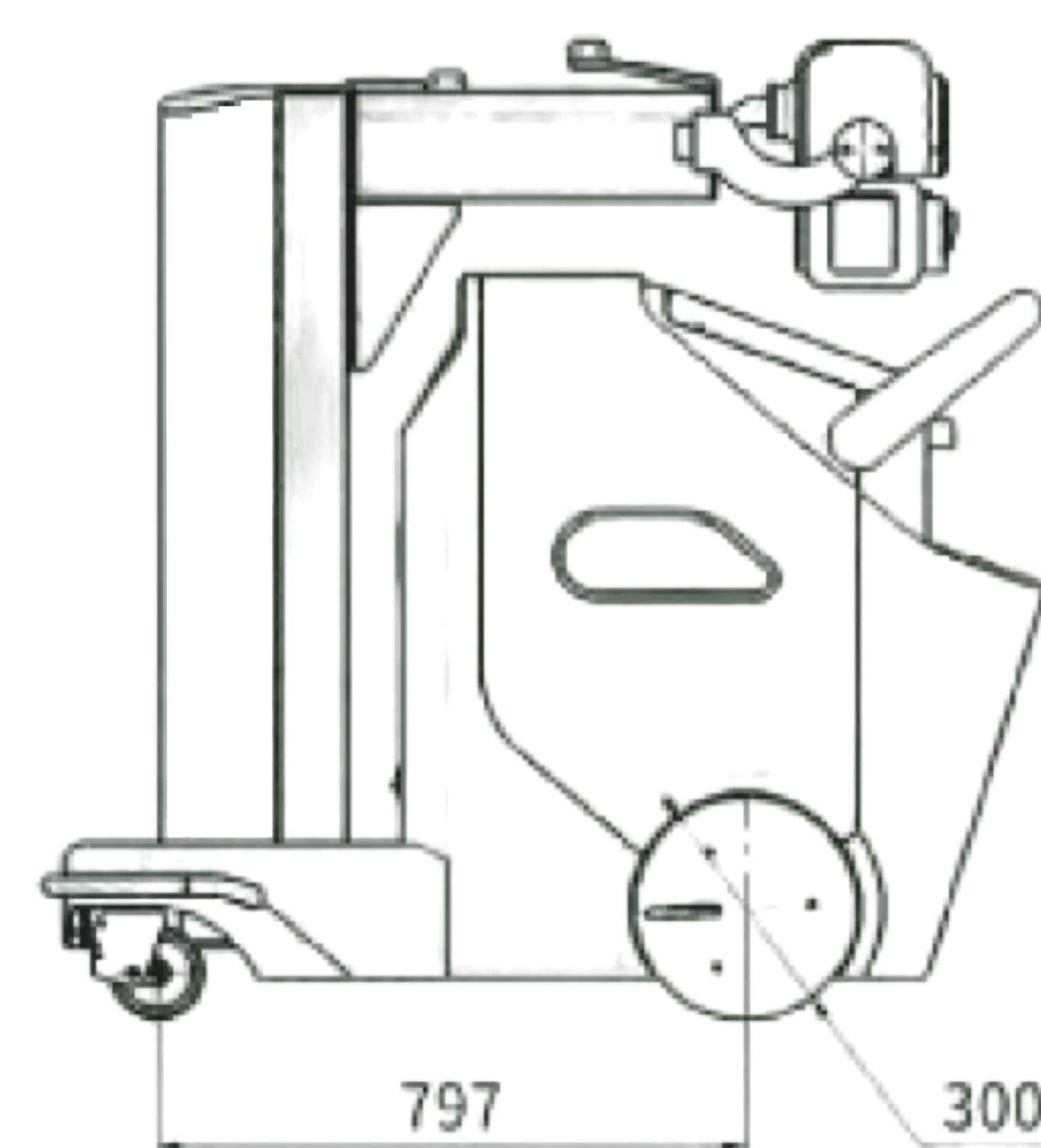
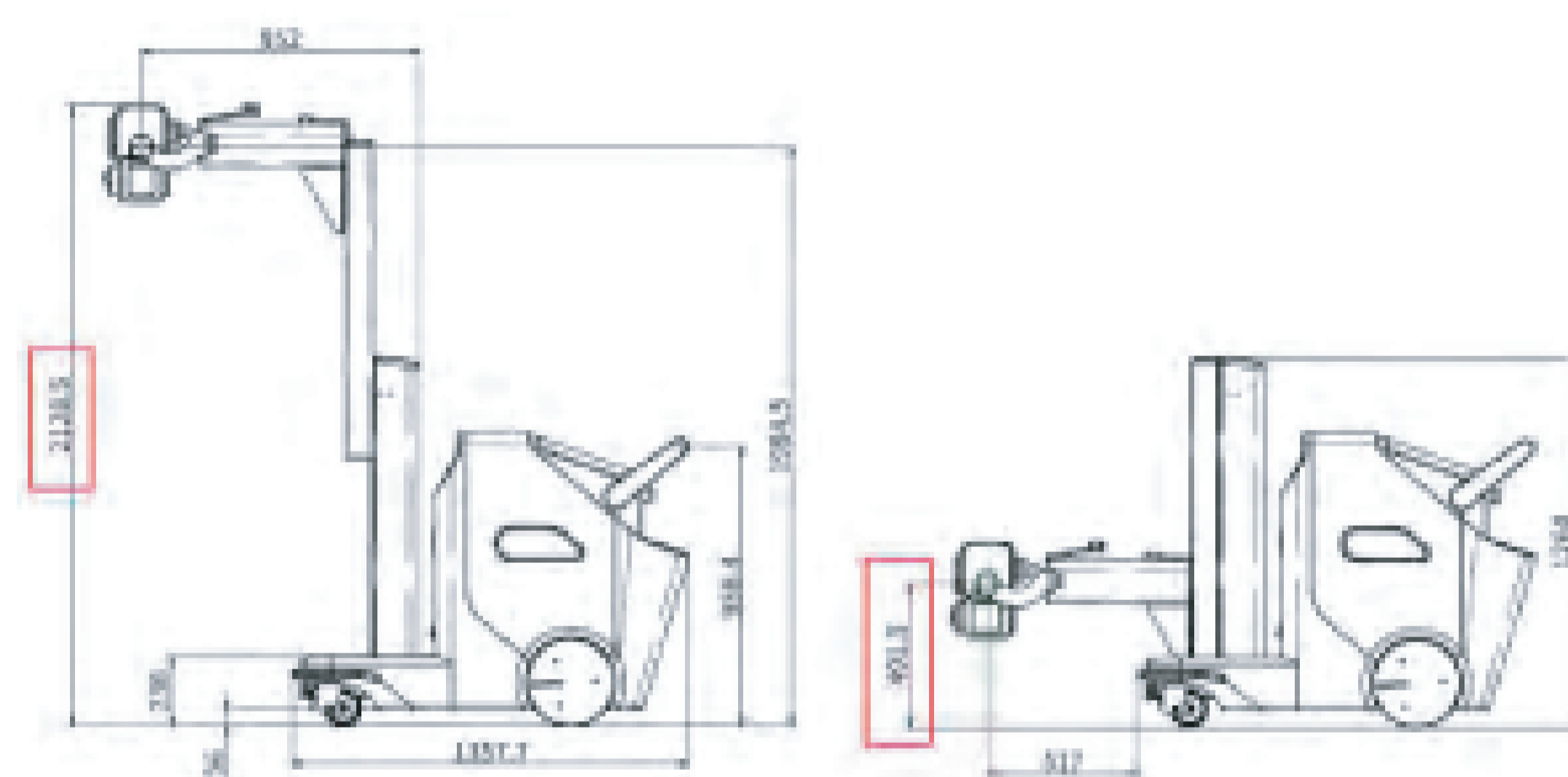
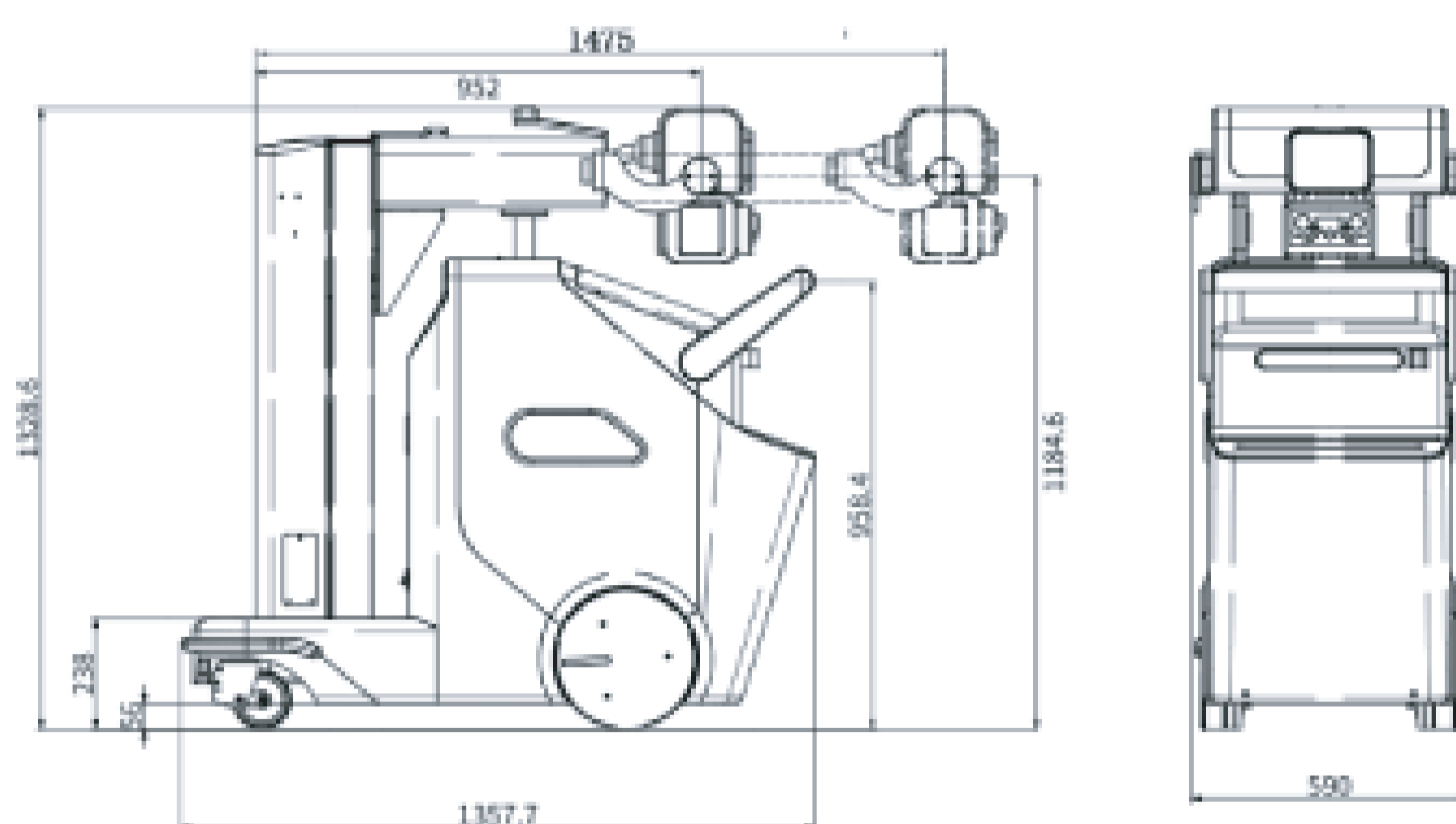
Tube Voltage: 40-150KV

Tube Current: 30-500mA

Tube Thermal Capacity: 900KJ

Rotation Anode (2800rpm), dual focus: 0.6/1.2

Anode Thermal Capacity: 212KJ



l) Battery

Lithium Battery to drive system and generator control, one full charge can support machine working for 7days.

m) Wireless Flat Panel Detector

Scintillator	Csi
Active Area(mm ²)	14*17inch
Pixel Matrix	2304X2800
Pixel Pitch(um)	150
Spatial Resolution(lp/mm)	3.4
AD Conversion(bit)	16
Data Transmission.	GigE
Trigger Mode	AED/Software/Prep
Preview Image Time(S)	3
Full Image Time(S)	5
Dimensions(mm)	384×460X15
Weight(KG)	3.3
Battery Autonomy time(hour)	8
Operating Temperature(°C)	5-35
Operating Humidity(% RH)	30-80

