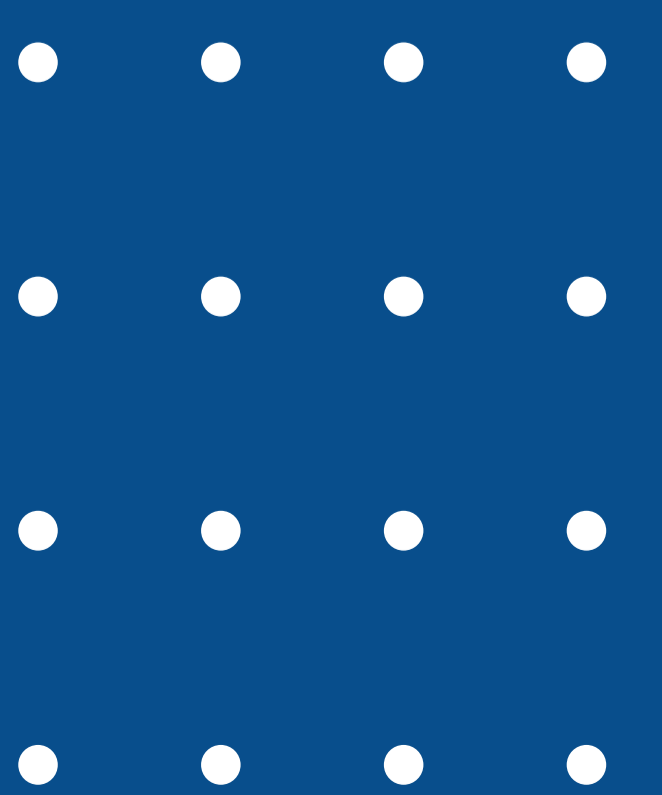


# ***ELK-5L316B***

## ***2°C~8°C PHARMACY REFRIGERATOR***



## 2°C~8°C Pharmacy Refrigerator

Suitable to store vaccines, medicines and laboratory products at 2°C to 8°C temperature range. Application could be found at pharmacies, pharmaceutical factories, hospitals, CDC, clinics, laboratories. Leading technologies for Safer storage and Higher temperature stability.

### Safer Storage Superior Temp. uniformity & Precise control

- Microcomputer temperature control.
- Dual display, temperature & Humidity.
- Temperature accuracy 0.1°C.
- Temperature variation  $\leq 2^{\circ}\text{C}$ .
- Temperature uniformity  $\pm 1^{\circ}\text{C}$
- USB port, temp. record traceable.
- Backup battery.
- Audible & visual alarm systems.

### Advanced Technologies Reliable & stable performance

- International famous compressor.
- Top cooling system.
- DC turbo fan.
- Built-in air duct.
- LBA forming technology.
- Micro-channel condenser .
- Patented D+ heat exchange technology, high efficiency. and energy saving.

### Humanized Design Friendly for daily use

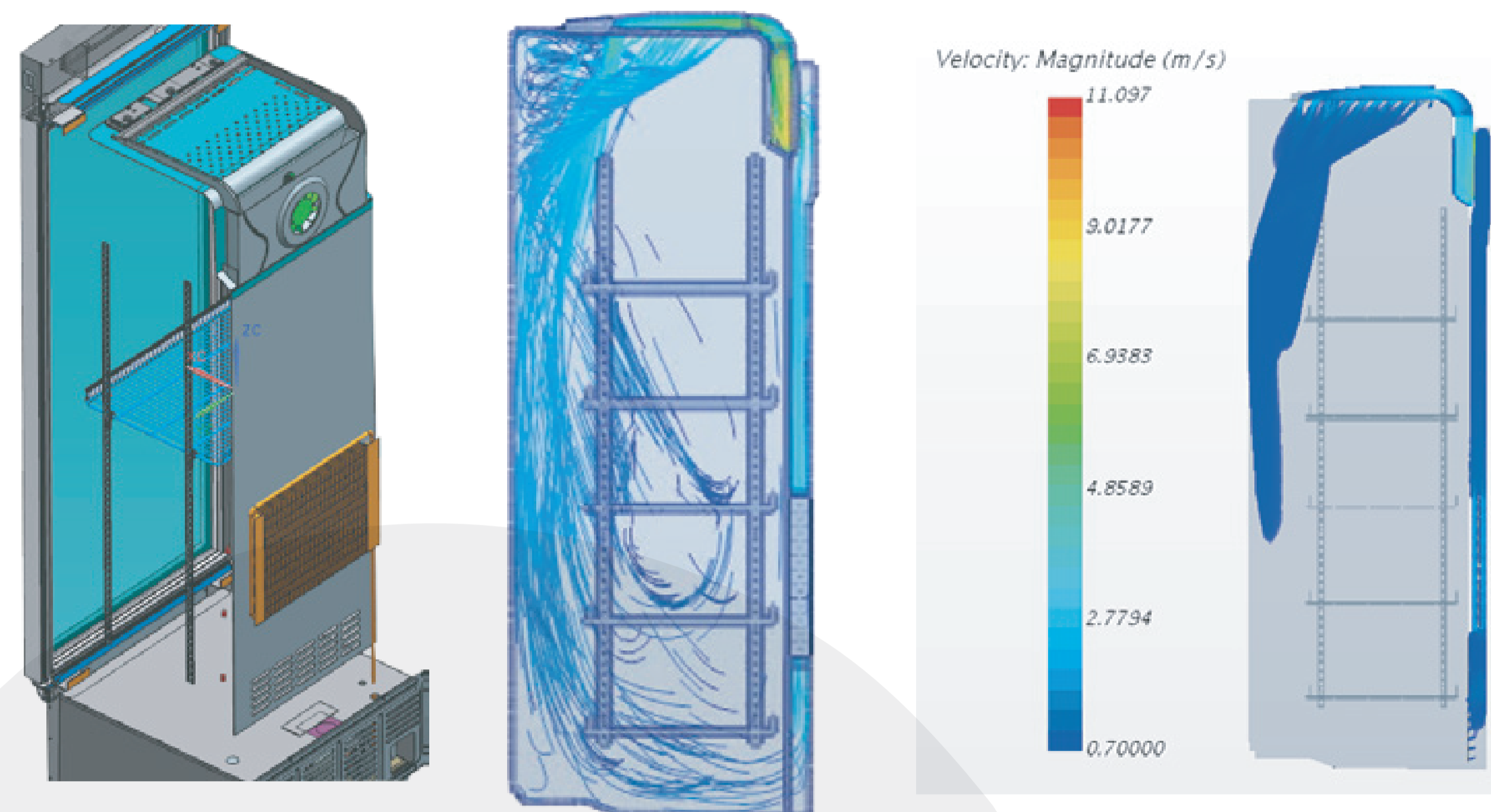
- Electric heating glass door.
- Door self-close.
- Adjustable shelves with label holder.
- Porthole.
- Adjustable LED light.
- Wide voltage range design.



## Top cooling system

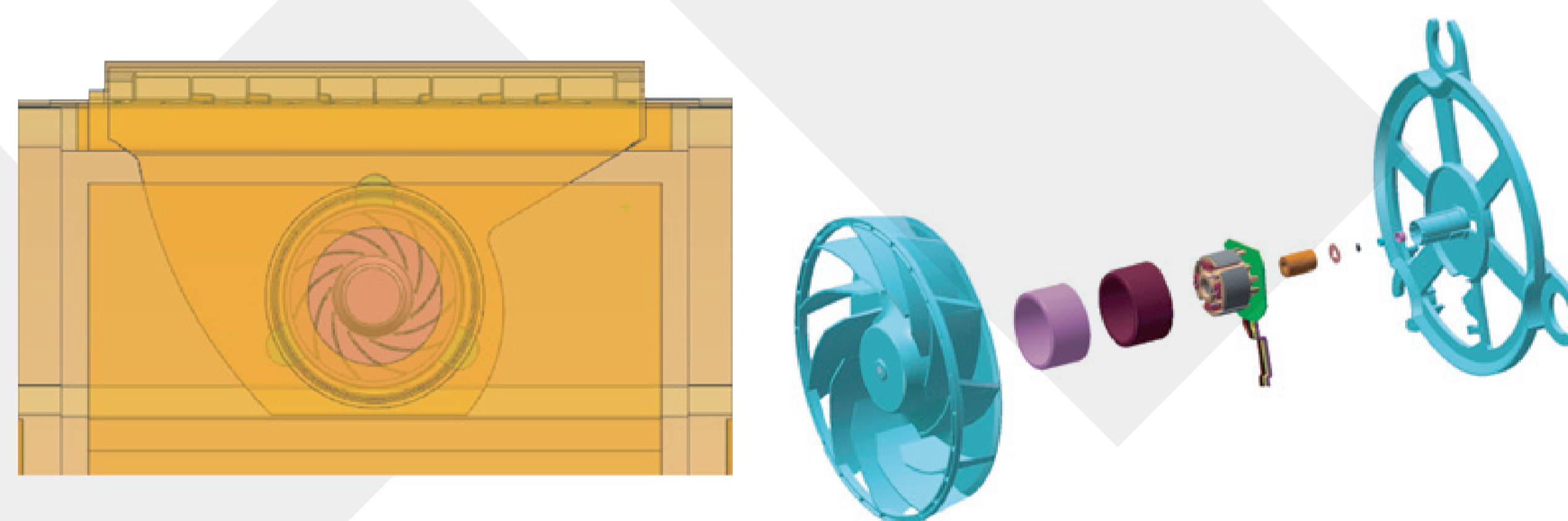
Strong cooling airflow from the top to the bottom, works as an air curtain to block the external hot air from entering the refrigerator when door is opening, so as to prevent the temperature in the cabinet from rising rapidly, also contributes better temperature uniformity performance.

Improves temperature uniformity performance by 40%. Max interior temperature difference  $\pm 1^{\circ}\text{C}$ . Prevent temperature rising rapidly when door is opening. Energy consumption 47% lower than similar sized normal pharmacy refrigerator.



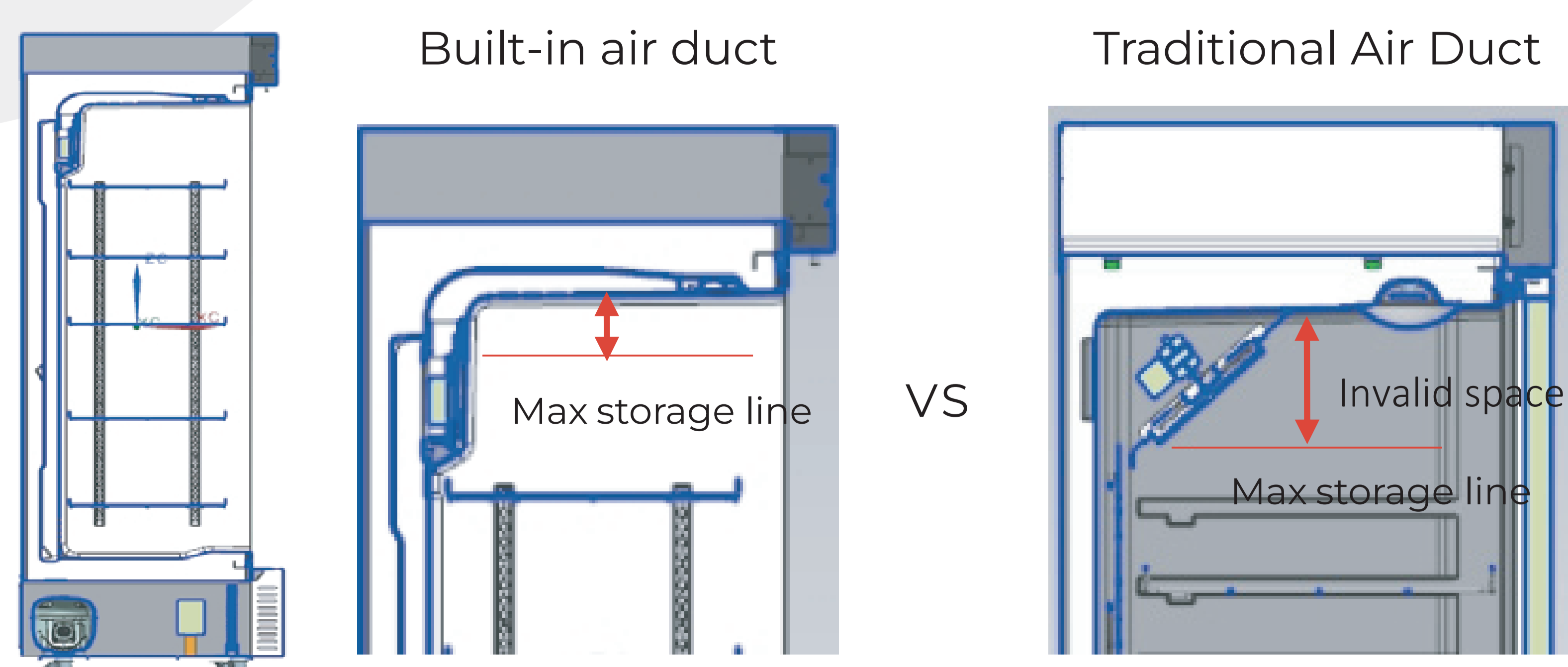
## DC Turbo Fan

- Decrease noise level by 8%
- Integrated DC Turbo Fan works with smaller vibration and higher efficiency.
- Safer for daily use
- No strong electric component in chamber, safer & more reliable.



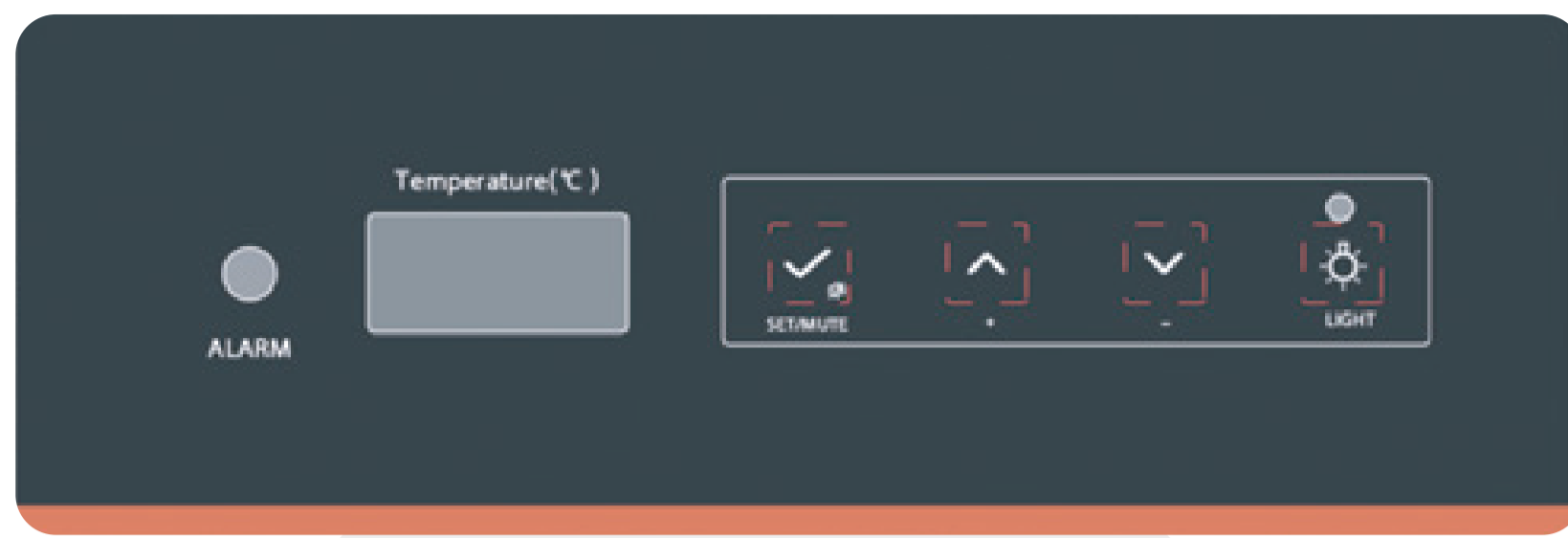
## Built-in air duct

- Increase the effective interior space by 10%
- Less interior space occupancy.
- Built-in air duct plus the Top cooling design, ensure
- temperature in the top of chamber is cool enough for storage.



## LED Display

Display real-time temperature

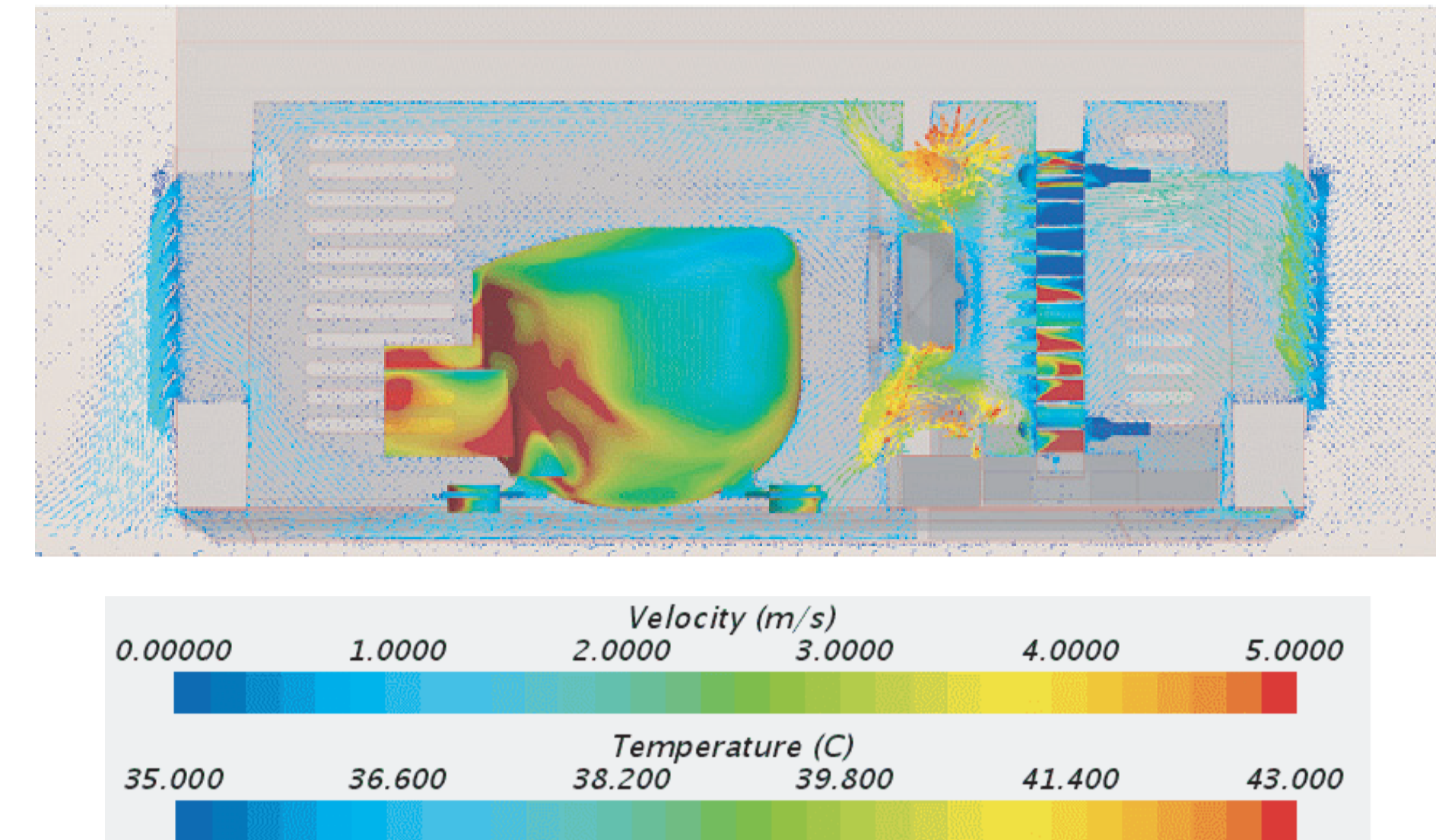


## LBA Forming Technology

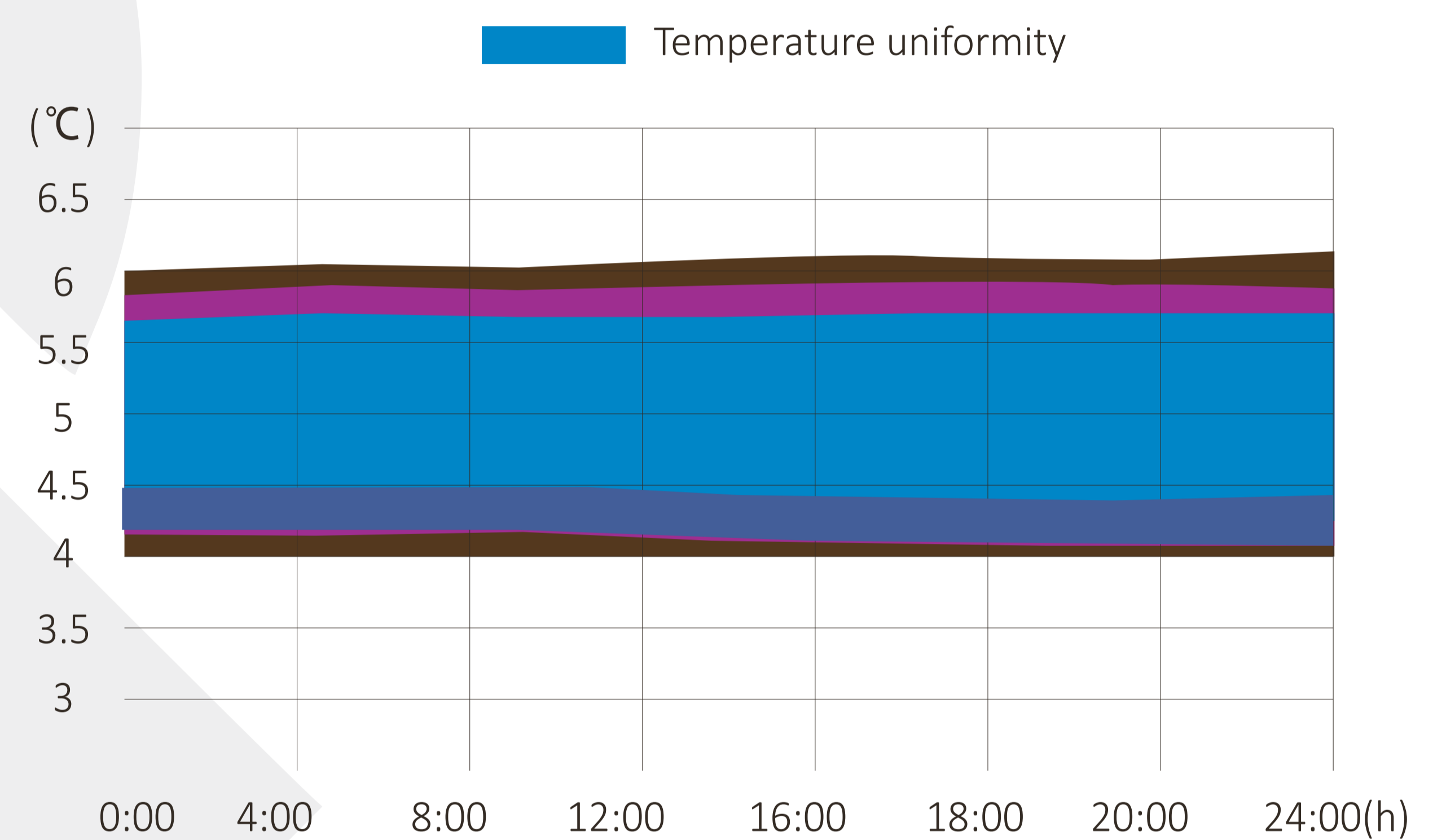
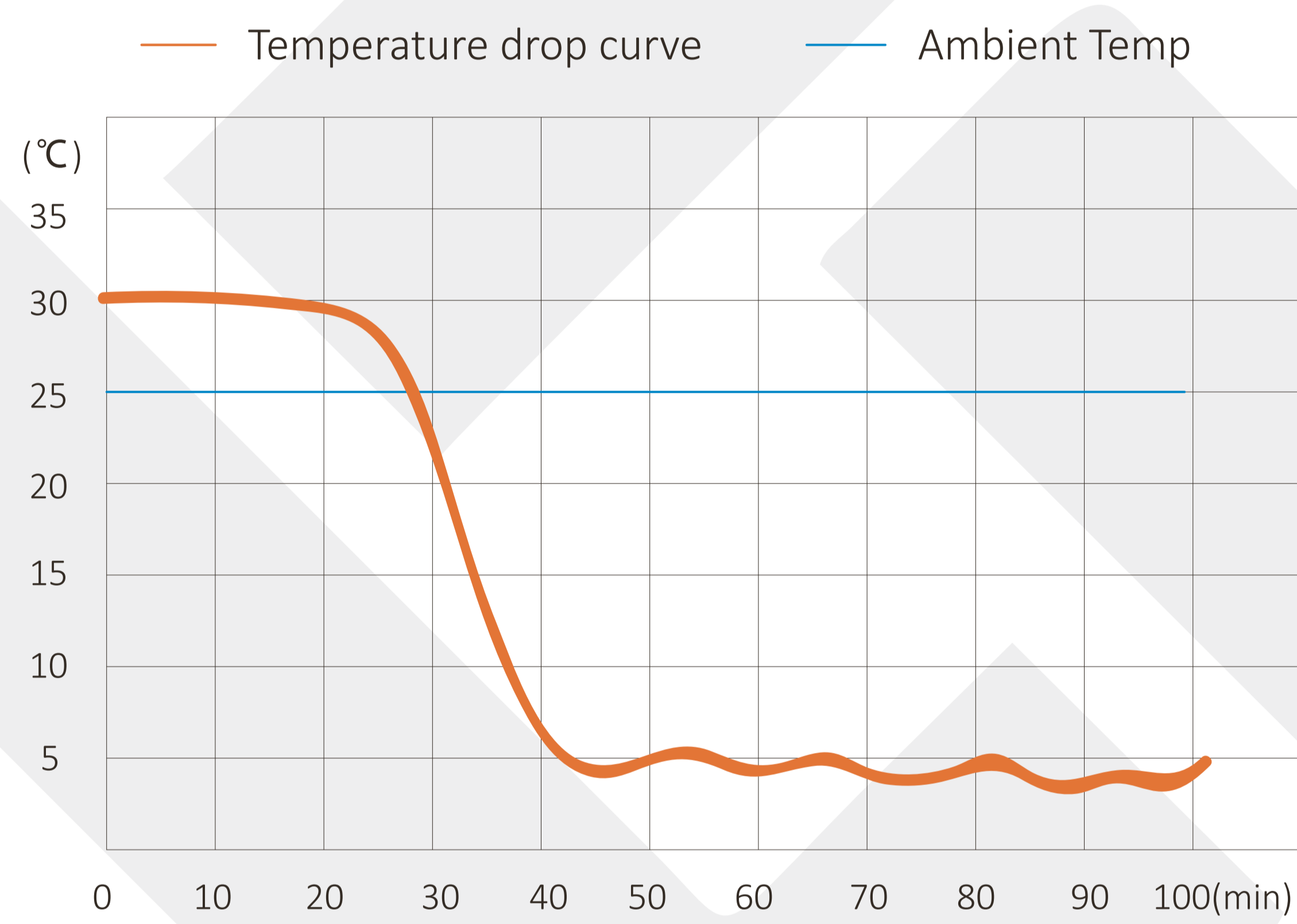
The world's leading fourth generation foaming agent  
More uniform density, Better insulation, more energy-saving. More reasonable foaming layer design, larger interior storage space.

## Micro-channel condenser

Compressor overheating protection, effectively improving the service life of the core part. Powerful heat dissipation for condenser, heat exchange capacity increase by more than 20% than common copper tube fin condenser of other suppliers.



## Typical Performance Characteristics at 25°C Ambient



Item	Model No.	ELK-5L316B
Dimensions	Load capacity (40HQ)	54
	Fridge Storage Volume(L)	310
	Product Dimensions(mm)(wxdxh)	595*603*1920
	Interior Dimensions(mm)(wxdxh)	500*464*1343
	Net/Gross Weight	68/76

<b>Technical data</b>	Cooling Type	Forced air cooling
	Defrost type	Auto
	Climate Class	N
	Refrigerant/Amount(g)	R600a/36g
	Compressor type	Fixed Frequency
	Sensor Qty	3
<b>Product Performance</b>	Temperature Range	2 ~ 8°C
	Temperature Uniformity/°C	2
	Temperature Volatility/°C	1.5
	Temperature Accuracy	0.1
<b>Control</b>	Controller	Microprocessor
	Display	LED (Temperature)
<b>Electrical Data</b>	Rated Current(A)	1
	Rated Power(W)	190
<b>Alarms</b>	Power Failure Alarm	N
	Sensor Failure Alarm	Y
	Environment Temperature Alarm	Y
	Door ajar Alarm	Y
	High Temperature Alarm	Y
	Low Temperature Alarm	Y
	Remote Alarm	N
<b>Accessories</b>	Shelves/Drawers Qty	5
	Anti-condensation Door	Electrical Heating
	Self-lock	N
	Label Card Holder	Y
	Cable Port	Y1
	Castors/type	2/Omni-directional 2/fixed-directional
	USB	N
	RS-485 Port	N
	Printer	N
	Backup Battery	N